

MAGNETONE

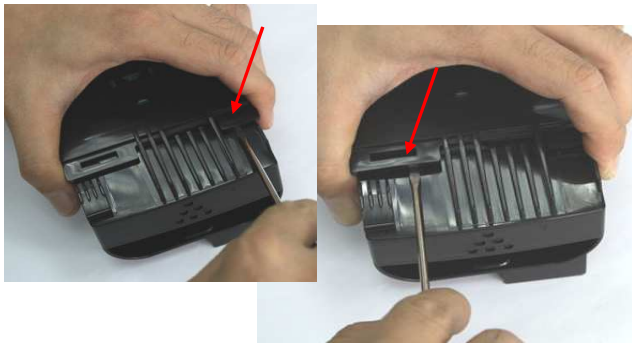
QUALITY DRIVEN . SERVICE - ORIENTED . CUSTOMER - FOCUSED

TECHNICAL INSTRUCTIONS FOR REFILLING DC-240/250 TONER CARTRIDGE



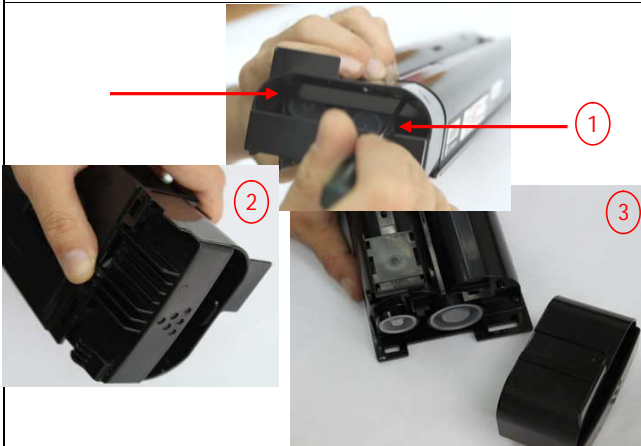
STEP 1

Remove toner cartridge from machine.



STEP 2

Gently push on both clips at top of the toner cap to loosen cap.



STEP 3

1) Gently push both clips at the side of toner cap.
2) & 3) Once all 4 clips are unclicked, gently push toner cap to detach from toner cartridge.



MAGNETONE

QUALITY DRIVEN . SERVICE - ORIENTED . CUSTOMER - FOCUSED

TECHNICAL INSTRUCTIONS FOR REFILLING DC-240/250 TONER CARTRIDGE



STEP 4

Remove toner cap and clear excess (old) toner from cartridge before filling with new replacement toner.

Install toner cap after refilling.



STEP 5

Repeat Step 2 to install cartridge cap.



STEP 6

Gently push used toner chip to remove it from chip slot.



MAGNETONE

QUALITY DRIVEN . SERVICE - ORIENTED . CUSTOMER - FOCUSED

TECHNICAL INSTRUCTIONS FOR REFILLING OF TONER CARTRIDGE



STEP 7

Slide new toner chip into slot.



STEP 8

Refilled toner cartridge is ready for use.

