

INSTRUCTION SHEET: AIRBAG (CUTTING EDGE PACKAGING FOR TONER CARTRIDGES)

DURABLE .DAMAGE PROTECTION.LOW COST.SAVE SPACE.SHOCK PROTECTION.ENHANCE PRODUCT IMAGE.LIGHTWEIGHT

STYLE: OEM-STYLE AIRBAG



Place toner cartridge in airbag.

**** All airbags come in deflated form, to save storage space & freight costs.**



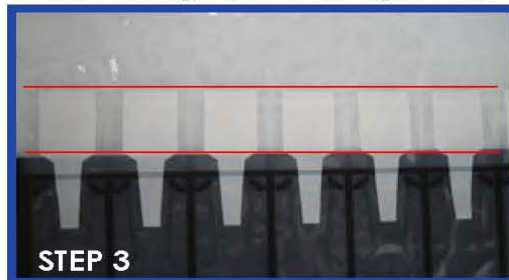
Set air pressures as follows:

0.5 - 0.7 kg/cm²

6.75 - 9.45 psi

0.05 - 0.07 Mpa

7 - 10 Lb/in²



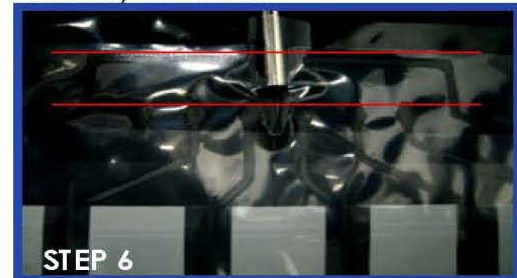
Heat seal airbag on the areas between the 2 red lines as indicated above.



Apply seal once the areas are correctly identified.



Insert nozzle of air compressor to inlet found at the top of airbag. Make sure all air columns are properly inflated before proceeding to second sealing.



Heat seal airbag on the areas between the 2 red lines as indicated above. Once the airbag is sealed the second time, no further inflation will be possible to reinforce airbag.



The sealed cartridge is now ready to be packed into carton box.

INSTRUCTION SHEET: AIRBAG (CUTTING EDGE PACKAGING FOR TONER CARTRIDGES)

DURABLE .DAMAGE PROTECTION.LOW COST.SAVE SPACE.SHOCK PROTECTION.ENHANCE PRODUCT IMAGE.LIGHTWEIGHT

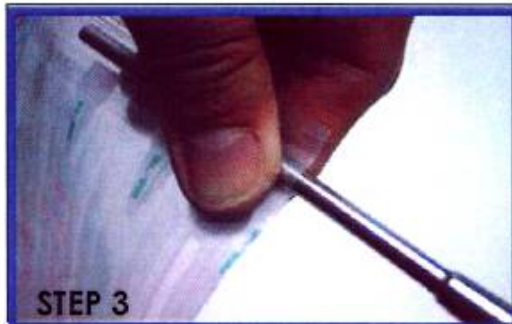
STYLE: CLEAR AIRBAG



Seal cartridge in black foil bag before placing it in airbag.
*** All airbags come in deflated form, to save storage space & freight costs.*



Set air pressures as follows:
0.5 - 0.7 kg/cm²
0.05 - 0.07 Mpa
6.75 - 9.45 psi
7 - 10 Lb/in²



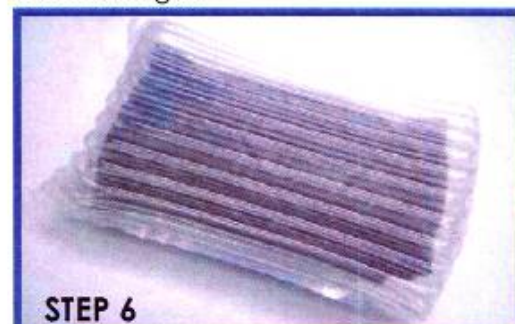
Insert nozzle of air compressor to the inlet at the top side of the airbag. When inflating airbag, grip inlet tightly around nozzle to speed up inflation.



Once all air columns are inflated, remove nozzle from inlet. The airbag will automatically seal up by itself. Fold airbag as shown above to secure the cartridge.



Further inflation can still be done, to reinforce airbag when necessary.



The sealed cartridge is now ready to be packed into carton box.